



[www.er6italia.com](http://www.er6italia.com)

La comunità virtuale dedicata alle Kawasaki ER-6n,  
ER-6f e Versys

## BARRACUDA

<http://www.barracudamoto.it/>

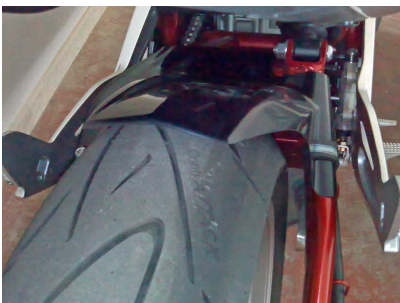


## BODYSTYLE

[http://www.ambi-bike.de/home.html?hinterabdeck/abdeck\\_home.html](http://www.ambi-bike.de/home.html?hinterabdeck/abdeck_home.html)



## ERMAX



e-mail: [staff@er6italia.com](mailto:staff@er6italia.com)



[www.er6italia.com](http://www.er6italia.com)

La comunità virtuale dedicata alle Kawasaki ER-6n,  
ER-6f e Versys

## GDBAR

[http://www.amt-distribution.com/catalog/product\\_info.php?products\\_id=376](http://www.amt-distribution.com/catalog/product_info.php?products_id=376)



## JESTER TRICK BITS

<http://www.jestertrickbits.co.uk/acatalog/ER6.html>

[http://www.pyramid-plastics.co.uk/catalog/index.php?cPath=58\\_1163&osCsid=e3b40dd74659669d13bde853c6ada11e](http://www.pyramid-plastics.co.uk/catalog/index.php?cPath=58_1163&osCsid=e3b40dd74659669d13bde853c6ada11e)



**e-mail: [staff@er6italia.com](mailto:staff@er6italia.com)**



[www.er6italia.com](http://www.er6italia.com)

La comunità virtuale dedicata alle Kawasaki ER-6n,  
ER-6f e Versys

## JVM

<http://www.jmvconcept.fr/>



## POLY26

<http://www.poly26.com/modele.php?mq=3&md=257>



## POWERBRONZE

<http://www.ferracci.it/>

[http://www.powerbronze.co.uk/Display\\_Screen.asp?SSN\\_LNG=ENG&SSN\\_CUR=UK%20Å.Å£&PRG\\_ID=25354#MODEL?SSN\\_LNG=ENG&SSN\\_CUR=UK%20Å.Å£](http://www.powerbronze.co.uk/Display_Screen.asp?SSN_LNG=ENG&SSN_CUR=UK%20Å.Å£&PRG_ID=25354#MODEL?SSN_LNG=ENG&SSN_CUR=UK%20Å.Å£)

[http://www.tagomotocorse.com/kawasaki/er6n/2005/parafanghi\\_posteriori/16371\\_parafango\\_posteriore\\_powerbronze.php](http://www.tagomotocorse.com/kawasaki/er6n/2005/parafanghi_posteriori/16371_parafango_posteriore_powerbronze.php)

<http://www.mototecnicaaisaia.com/scheda.aspx?ent=1&id=4203>



**e-mail: [staff@er6italia.com](mailto:staff@er6italia.com)**



[www.er6italia.com](http://www.er6italia.com)

La comunità virtuale dedicata alle Kawasaki ER-6n,  
ER-6f e Versys

## PRETIGIUSEPPE

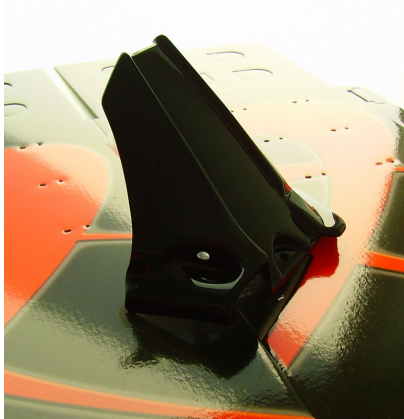
<http://www.pretigiuseppe.it/prodotti.htm>



## PUIG

<http://www.puig.tv/>

<http://www.motoaccs.com/>



e-mail: [staff@er6italia.com](mailto:staff@er6italia.com)



[www.er6italia.com](http://www.er6italia.com)

La comunità virtuale dedicata alle Kawasaki ER-6n,  
ER-6f e Versys

## PYRAMID

[http://www.pyramid-plastics.co.uk/catalog/index.php?cPath=58\\_1163&osCsid=e3b40dd74659669d13bdc853c6ada11e](http://www.pyramid-plastics.co.uk/catalog/index.php?cPath=58_1163&osCsid=e3b40dd74659669d13bdc853c6ada11e)



## S2

<http://www.s2-concept.com/>  
<http://www.newtechracing.com/>



## SKIDMARX

<http://www.skidmarx.co.uk/ER6.htm>  
<http://www.styl-moto.com/>  
<http://www.italiamoto.it/>



e-mail: [staff@er6italia.com](mailto:staff@er6italia.com)

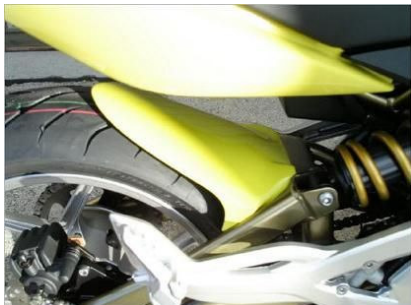


[www.er6italia.com](http://www.er6italia.com)

La comunità virtuale dedicata alle Kawasaki ER-6n,  
ER-6f e Versys

## SFIZZZERO

<http://www.weber-motos.ch/umbautenzubehoer/cd2ef6971f07a8f06/index.php>



## TOPLINE

<http://www.espace-tuning.com/KAWASAKI/ER-6-2005/ER-6-2005--TOPLINE/c-1-141-186-187/>

[http://www.burn-out.it/html/topline\\_kawasaki\\_10.html](http://www.burn-out.it/html/topline_kawasaki_10.html)



## ALTRI SENZA MARCA O LINK



e-mail: [staff@er6italia.com](mailto:staff@er6italia.com)



[www.er6italia.com](http://www.er6italia.com)


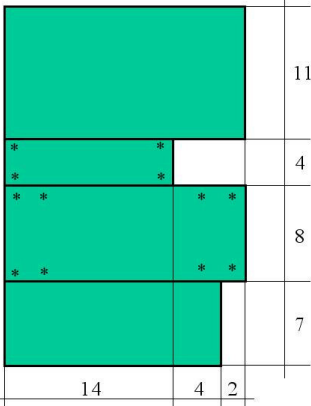
La comunità virtuale dedicata alle Kawasaki ER-6n, ER-6f e Versys

**ARTIGIANALE IN FIBRA**



**ARTIGIANALE IN PLEXIGLASS**



		
	11	
	4	
	8	
	7	
	14	4 2

**e-mail: [staff@er6italia.com](mailto:staff@er6italia.com)**

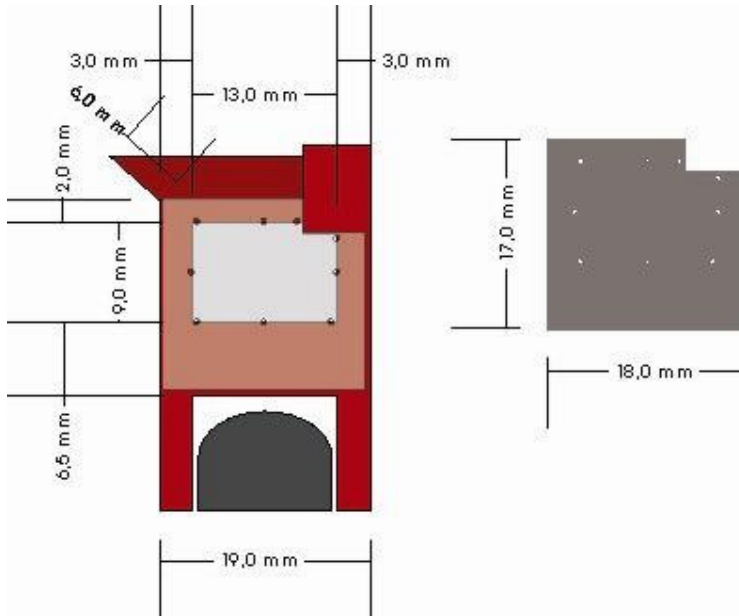


[www.er6italia.com](http://www.er6italia.com)

La comunità virtuale dedicata alle Kawasaki ER-6n,  
ER-6f e Versys

## PARASCHIZZI

---



**e-mail: [staff@er6italia.com](mailto:staff@er6italia.com)**